

UXCell MP4 Player

User manual

Content >>

A. GET YOUR MP4-PLAYER READY

- A.1. Charge the battery
- A.2. Turn on / off the player
- A.3. Speaker (this feature depends on the model)

B. SAVE SONGS ON YOUR MP4-PLAYER

C. FUNCTIONS AND DISCRIPTION OF THE SUBMENUS

C.1. Music

- C.1.1. Play and stop a title
- C.1.2. Play forwards/reverse within a title
- C.1.3. Skip to the next title or previous title
- C.1.4. Adjust Volume
- C.1.5. Play titles in a folder

C.2. Further sub functions in the Menu “Music”

C.3. Voice Recording

- C.3.1. Setting the record mode
- C.3.2. Record

C.4. Play a voice- or radio recording (direct recording)

- C.4.1. Play and stop a direct recording
- C.4.2. Play forward/reverse within a direct recording
- C.4.3. Skip to the next title or previous title of your direct recording

C.5. FM-Radio

- C.5.1. Search for a radio station
- C.5.2. Further functions in the FM-Mode

C.6. Movie (AMV)

- C.6.1. Play and stop a video
- C.6.2. Play forwards/reverse within a video
- C.6.3. Skip to the next video or previous video
- C.6.4. Adjust Volume
- C.6.5. Play video in a folder

C.7. View pictures

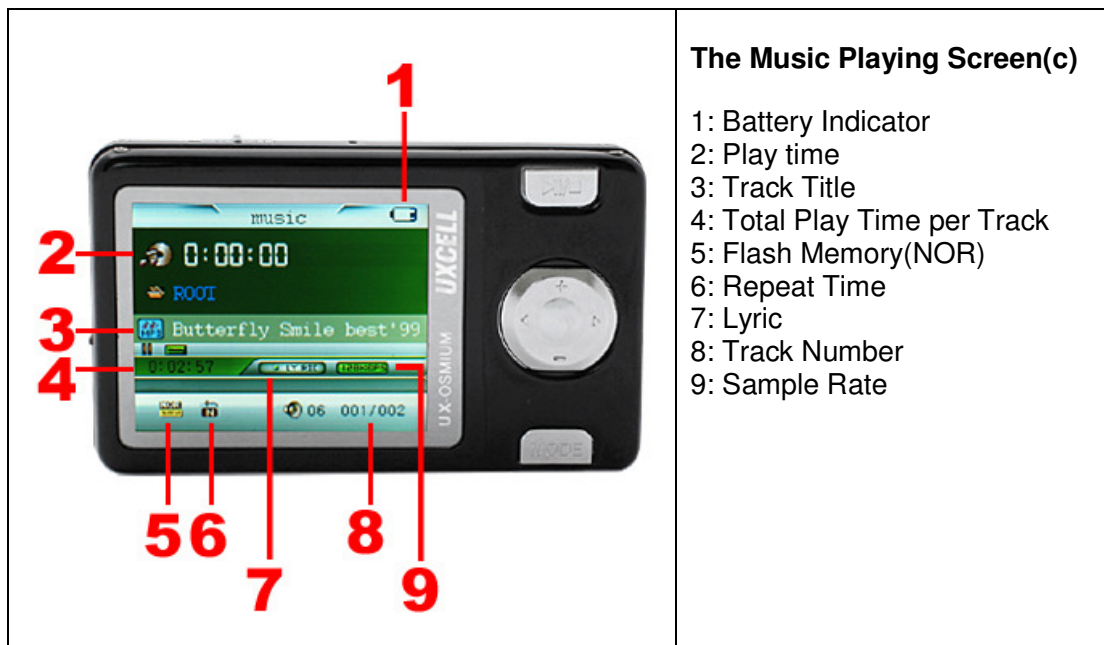
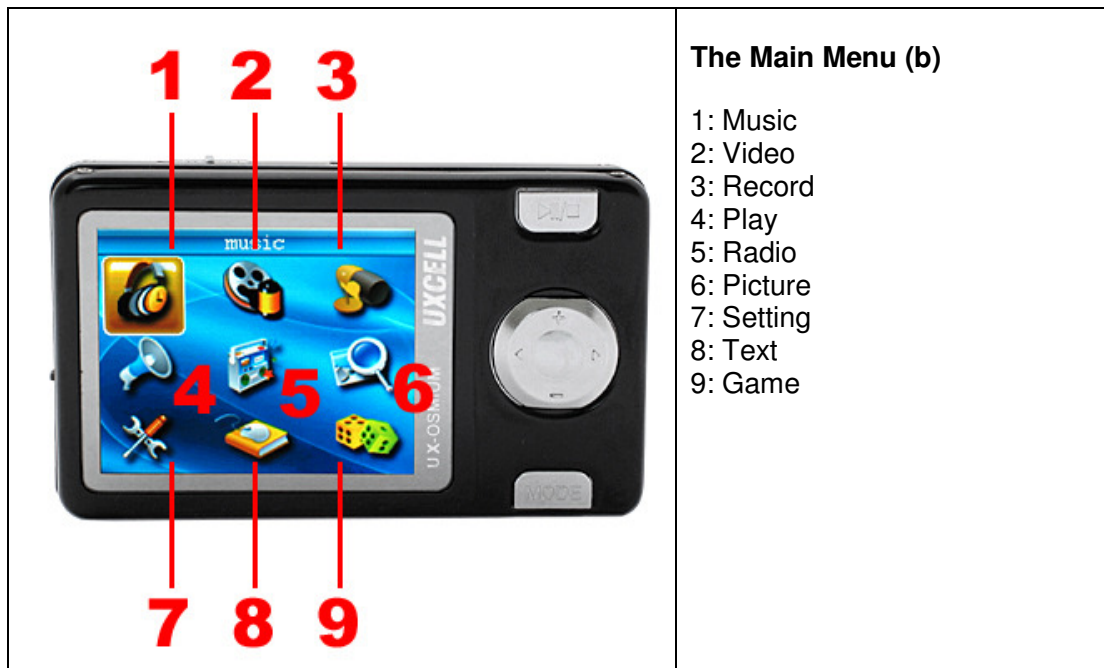
C.8. Setup (Clock/Brightness/Black (turn off display automatically)/Language/Power off/...)

C.9. The E-book

The MP4 Player >> Controls and Components

 <p>Diagram showing the front view of the UX-Osmium MP4 Player with numbered callouts:</p> <ul style="list-style-type: none"> 1: ON/OFF button 2: Play and Pause button 3: Skip Forward/Reverse, Volume +/- buttons 4: Mode button 5: Line In port 6: USB Port 7: 2.5mm Audio Jack 	<p>The Body (a)</p> <ul style="list-style-type: none"> 1: ON/OFF 2: Play and Pause 3: Skip Forward/Reverse, Volume +/- 4: Mode 5: Line In 6: USB Port 7: 2.5mm Audio Jack
 <p>Outline view of the UX-Osmium MP4 Player showing its overall shape and screen.</p>	<p>UX-Osmium MP4 Player Outline Figure</p>

The MP4 Player >> Using the Menu Screen



A. GET YOUR MP4-PLAYER READY

A.1. Charge the battery

Before you bring your player into service, you have to charge the battery.

For this procedure you have to connect the MP4-Player to a power source with the USB-cable. As a power source, you can use a free USB-port of your computer or just connect the USB-cable with the adapter to your power socket.

A.2. Turn on / off the player

Push the ON/OFF-Button to the position ON or OFF

Press the "Play-Button" (a-2) continuously until the animated picture appears in the display.

Press the "Play-Button" (a-2) continuously until the Player turns off.

A.3. Speaker (this feature depends on the model)

Just unplug your earphones to listen the sound via the speaker. Notice: you can't listen to radio if you are using this function because the earphone is also working as antenna.

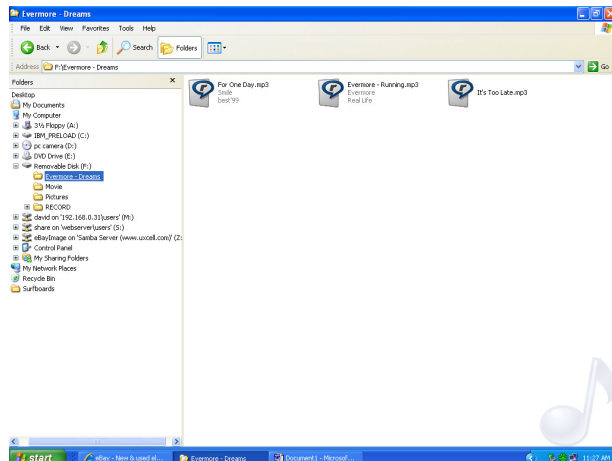
B. SAVE SONGS, VIDEOS AND PICTURES ON YOUR MP4-PLAYER

Before you can download files - you have to turn on and connect the player with your computer via the USB-cable. After the connection several seconds - Windows will recognize the player as a removable disc drive (the speed of the recognition depends on the performance of your computer). After your computer has recognized the player, please follow the next steps:

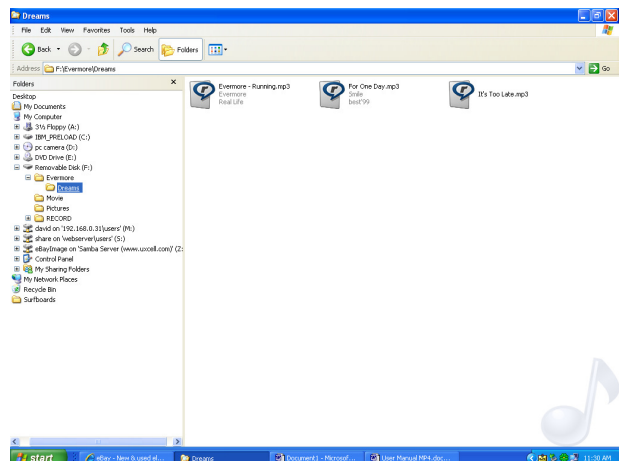
1. Open the Windows-Explore (mouse arrow on "Start" and press the right mouse button; move the mouse arrow to Explore and click the left mouse button).
2. Now you can see in the Explore an additional removable disc drive in the left column "FOLDER" (D: E: or F: - depending on the number of drives you have installed in your computer) which is your MP4-Player.
3. To copy a file from your hard disc – you have to select the music file or files of your choice at first. Afterwards you can move those files via "Drag and Drop" or via "Copy and Paste" to your player (removable disc drive).
4. Please, make sure that you NEVER disconnect the player during the data transfer. Otherwise, it will damage the memory chip of the MP4-Player.
5. If you like to group your files - like album, artist, pictures etc. – you can create folders on your MP4-Player with the Explore (File/New/Folder). Please, get sure that the folder contains no subfolders and that there aren't more than 99 files saved in each folder on the player.

Correct (one folder for max. 99 files)

F:\Evermore-Dreams*.mp3 ...

**Wrong (files in a subfolder of the folder)**

F:\Evermore\Dreams*.mp3 ...



Please notice that the Player just supports the following music file formats:

- MP3, WMA

Information's how to convert music files from an audio CD etc. to an MP3-file and handle the copy protection of WMA-files will you find on our www.uxcell.com website (FAQ/Download).

Troubleshooting: If you find it hard to download files from PC or “format error” appears, you need to format your MP4 flash memory to solve it, before you format memory, you must back up your files and then choose “format”, a window bounce up and choose file system: FAT (not FAT32), after formatting, you can download files to your player easily!!!

C. FUNCTIONS AND DISCRIPTION OF THE SUBMENUS

C.1. Music

To get access to the Menu “Music”, you have to press the button “Mode”(a-4) once. Now the last played track will appear in the display. Press “Play” (a-2) once to play the music and lyric display, press “Mode” (a-4) to exit lyric mode, then hold the “Mode” (a-4) for two seconds to exit the “Music” play

C.1.1. Play and stop a title:

To play a MP3-file you have to press the button “Play”(a-2) once.

If you want to stop/pause the playing title than press the button “Play”(a-2) once again.

C.1.2. Play forwards/reverse within a title:

If you want to play forward or reverse within a track than press the button “Forward or Reverse” (a-3) continuously until you reach the desired point of the track.

C.1.3. Skip to the next or previous title

If you want to skip to the next title or a previous one – press once the button “Forward or Reverse” (a-3) to skip to the next tile or skip to the previous title.

C.1.4. Adjust the Volume

If you want to regulate the volume you have to press once the button “VOL+/-“(a-3). The speaker icon on the bottom bar of the screen displays value of volume. Now you can increase the volume by pressing the “Volume +/-” (a-3) or reduce the volume

C.1.5. Play songs in a folder

Before you play the songs that you can enter the “settings” to set the play modes, press once the button “Mode” (a-4) to enter the “settings” mode for the following menu:

MENU	SUB MENU	DISCRIPTION
Music Local Folder	<ul style="list-style-type: none"> ● Root ● Record 	1: You can choose desired mode to set, you press the “mode button” once to enter the sub menu and press the “forward or reverse button” to choose your desired song, press “Play” button once to play 2: Press “play” button once to exit local folder
Delete		Choose a dislike song to delete out in your memory, press “forward or reverse button” to choose it and press “mode” once to delete
Delete All		You can choose it if you want to delete all music files, press “forward or reverse button” to choose it and press “mode” once to delete
MENU	SUB MENU	DISCRIPTION
Repeat	NORMAL	Will not repeat and will stop playing after all saved titles are played
	REPEAT ONE	Repeats constantly the selected title
	FOLDER	Will not repeat and will stop playing after all titles in the selected folder are played.
	REPEAT FOLDER	Repeats constantly all titles in the selected folder
	REPEAT ALL	Repeats constantly all titles which are saved on the MP4-Player
	RANDOM	Plays all saved titles randomly
	INTRO	Skip to the next title after 10 seconds
Equalizer	Natural, Rock, Pop, Classic, Soft, Jazz, DBB	Choose the sound effect of your choice.

Tempo rate		Press once the button "Rewind" (5) - to lower the play speed or press once the button "Forward" (3) - to increase the play speed
Replay		A-B Function: If you want to repeat a segment within a title of your choice, press the button "Play" (6) to mark your starting point. Press the button "Play" (6) again to mark the end of the segment, which you want to play.
Replay Times		Number of the repeats in the A-B mode Press the "Forward-button" (3) or the "Rewind-button" (5) to increase or reduce the number of repeats of your selected segment in the A-B mode (1 to 10 repeats)
Replay Gap		Mute-break between the A-B repeats To increase or decrease the time between the silent break in the A-B mode, press the "Forward-button" (3) or the "Rewind-button" (5)
Exit		Back to the Main Menu Press once the "Mode-button" (a-4) to go back to the main menu

C.2.Voice Recording

Select "Record" mode in the Main Menu and confirm by pressing the "Mode-button"(a-4). Hold the button "Mode"(2) for two seconds to exit the menu.

C.2.1. Determine the record mode

Before you start with the voice recording, please enter the "settings" to set one of the following record modes (to get access to these function press once the button "Mode"(a-4).

MENU	SUB MENU	DISCRIPTION
LOCAL FOLDER	*Record Type	Select a folder: Choose the folder where you want to save the voice recording or REC-type, press "Mode" to confirm type
	Voice Record	Record in ACT-Format

Record type Folder	WMA music record	Record in high quality WMA - Format
	MP3 music record	Record in high quality MP3 - Format
EXIT		<i>Back to the Main Menu</i> Press once the "Mode-button" (a-4) to go back to the main menu

* Please, make sure that there is no background noise around you.

C.2.2. Record

After you choose your record mode, press the button "Play" (a2) to start the recording of your dictation.

To stop the recording, you have to press once the "Play" (a2) again. If you like to continue, press the same button again.

To save the recording permanently - including your breaks – as one file on your MP4-Player, press the button "Mode" (a-4) continuously until the text: "Saving..." appears in your display.

C.3. Playing a voice- or radio recording (direct recording)

Select "Music" in the Main Menu and confirm by pressing the "Mode-button" (a-4). Your records are at the beginning of the music. Hold the button "Mode" (a-4) to exit the menu, just like play a song.

C.3.1. Play and stop of a direct recording

To play a direct recording, you have to press once the button "Play" (a-2).

If you want to stop the play mode of the direct recording, press once the button "Play" (a-2) again.

C.3.2. Play forward/rewind within a direct recording

If you want to play forward or reverse within a direct recording, press the button "Forward or Reverse" (a-3) continuously until you reach the desired point of your recording.

C.3.3 Skip to the next title or previous title of your direct recording

If you want to skip to the next title or previous one – press once the button "Forward or Reverse" (a-3) to skip to the next title or skip to the previous title of your direct recording.

C.4. FM-Radio

Select "FM Radio" in the main menu and confirm by pressing the "Mode-button" (2). Hold the button "Mode" (a-4) to exit the menu.

C.4.1. Search for a radio station

Press once the button "Forward or Reverse" (a-3) to scan the frequency band in 0.1 MHz until you reach the radio station of your choice.

Hold the “Forward or Reverse” (a-3) until the player starts scanning automatically for the next local radio station in your area.

Press the button “Play”(a-2) to skip between the radio stations, which you have saved in the player (please, follow the instruction C.4.2. for saving a radio station).

C.4.2. Further functions in the FM-Mode

To get access to more functions of the FM-Mode press shortly the button “Mode”(a-4).

FUNCTION	DISCRIPTION
Save	<i>Save a radio station:</i> Automatic save radio station you have searched (only one channel)
Scan FM radio	Press “forward or reverse” button to search radio station (you have a search radio station if you hear sound)
Repeat scan	Press “play” button to back 87MHz, you can search again from start point
Adjust volume	Press “VOL+/-“ to adjust its volume directly
EXIT	<i>Back to the Main Menu</i> Hold the “Mode-button“ (a-4) to go back to the main menu

C.5. AMV-Movies

Please, notice that this MP4-Player only supports videos in the AMV-format. The converter software and more information's - how to convert MPEG-, ASF-, AVI files to the AMV-format – can you find on our homepage www.uxcell.com (FAQ > DOWNLOAD).

To get access to the Menu “Movie“ you have to press the button “Mode“(a-4) once. Now the last played video will appear on the display. Hold the button “Mode“(a-4) to exit the menu.

C.5.1. Play and stop a Video:

To play an AMV-video you have to press the button “Play“(a-2) once.

If you want to stop the title than press the button “Play“(a-2) once again.

C.5.2. Play forwards/reverse within a video:

If you want to play forward or reverse within a video than press the button “Forward or Reverse” (a-3) continuously until you reach the desired point of the video.

C.5.3. Skip to the next- or previous video

If you want to skip to the next video or a previous one – press once the button “Forward or Reverse” (a-3) to skip to the next video or to skip to the previous video.

C.5.4. Adjust the Volume

At first get sure that no video is playing. If you want to regulate the volume you have to press once the button “VOL+/-“(a-3). The speaker sound will increase or reduce.

C.5.5. Play a video in a folder

Before you play the video that you copied in one of your created movie folder – please make sure that no other video is playing in the meantime. Press once the button “Mode” (a-4) to enter following video interface: you can press “forward or reverse” button to choose AMVs or press “VOL+/-” to adjust its volume, then press “play” button to play AMV

C.6. View Pictures

To get access to the Menu “Photo” you have to press the button “Mode” (a-4) once to select “picture”. Now a list with all your photos (just JPEG and GIF) will appear on the display. Hold the button “Mode”(a-4) to exit the menu.

C.6.1. Browse photos

Select a picture of your choice by pressing “Forward or Reverse” (a-3) and confirm by pressing “Play” (a-2) to view it.

C.6.2. Skip to the next or previous picture (Play Set = Manual Play)

If you want to skip to the next picture or a previous one – press once the button “Forward or Reverse” (a-3) to skip to the next picture or skip to the previous picture.

C.6.3. Exit the Picture show

Press “Mode” continuously to exit the picture show.

C.6.4. Play a picture in a folder

Before you play the picture that you copied in one of your created folders – please, make sure that the picture slideshow is not running. Press once the button “Mode” (a-4) for the following menu:

FUNCTION	DISCRIPTION
LOCAL FOLDER	Press once the button “Forward or Reverse” (a-3) to enter the submenu: “LOCAL FOLDER” and confirm by pressing button “Mode” (a-4). Now you can select by pressing the button “Forward or Reverse” (a-3) your favorite folder. To access the folder of your choice – press “Play” (a-2)
Exit picture play	Press once the button “Play” (a-2) to exit picture play and to the current folder

C.7. Setup (SYSTEM SETTINGS)

Select “Setup” in the Main Menu and confirm by pressing the “Mode-button”(a-4). Now you can enter to the following sub menus:

FUNCTION	SUB FUNCTIONS	DISCRIPTION
Music	Please note it in the next table	You can set repeat mode, play mode, EQ select and User EQ set.

FM Radio		Choose the status of stereo SW "on" or "off", select FM region, China, Europe, Japan or USA
Record		Select record quality, high quality or general quality; select record volume from 1-5.
Display		Select the blight time, lum and blight mode.
Power off time	Off time	Enter the idle time (0 sec. to 60 sec.) for the Player to be turned off automatically by pressing the button "Forward or Reverse" (a-3) and confirm by pressing the button "Mode" (2). If you want to turn off this function - than set the time to "0".
	Sleep time	Enter the playtime (0 min. to 120 min.) for the Player to be turned off automatically afterwards by pressing the buttons "Forward or Reverse" (a-3). If you want to turn off this function - than set the time to "0".
System		Choose language, check the version, go to upgrade and default set.
Format		To format what you do not need.

C.8. E-book

Press once the button "Mode" (a-4) for the following menu.

FUNCTION	SUB FUNCTIONS	DISCRIPTION
DIR		Folder Choose the folder where you saved your e-book
FILE		Choose a e-book title Choose the title of your e-book, by pressing the button "Forward or Reverse" (a-3) the title of your e-book and confirm by pressing "Mode" (a-4)
LOOK		After pressing the "Mode-button"(a-4), you can read your e-book, which you have chosen. Press the button "Forward or Reverse" (a-3) to flip through your e-book.

Press the button "Mode" (a-4) to leave this menu.

