

Instruction to replace I-Platinum built-in battery

I 、 Tools needed to perform the battery replacement



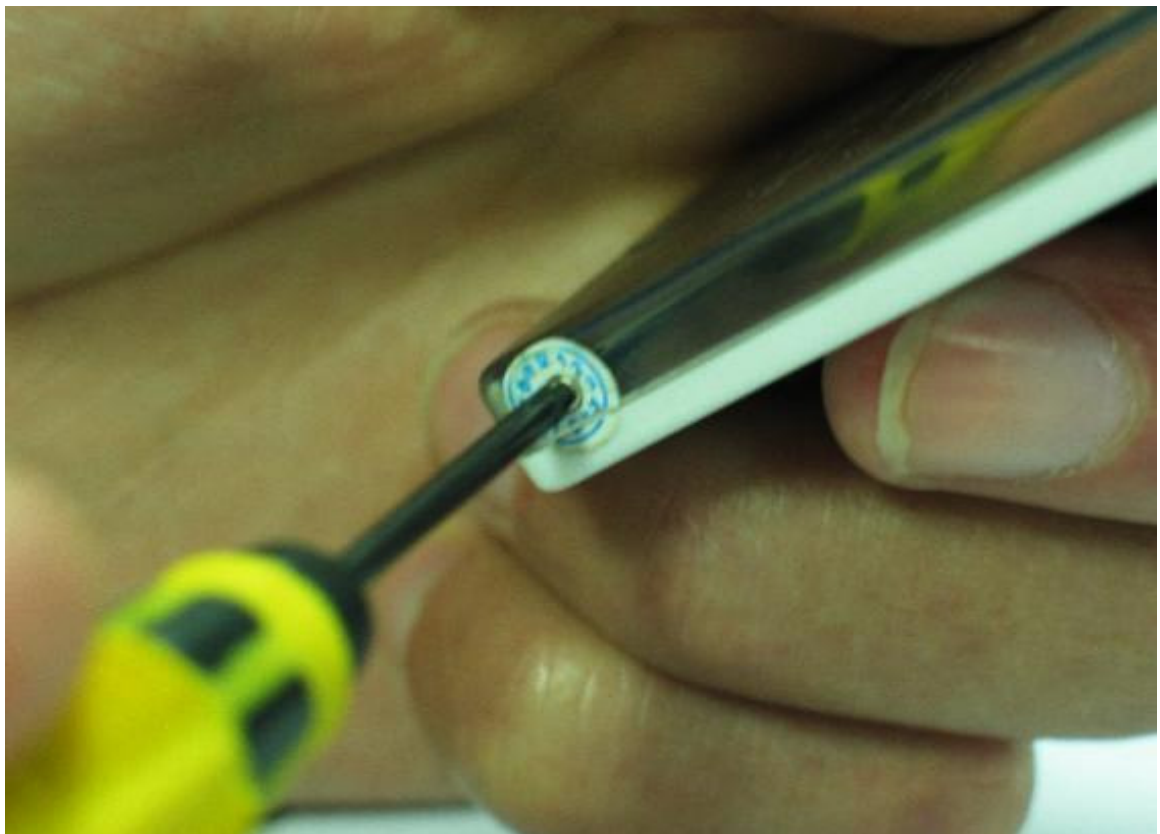
II 、 Dis-assemble the metal case of the mp4 player 1



III、 Dis-assemble the metal case of the mp4 player 2



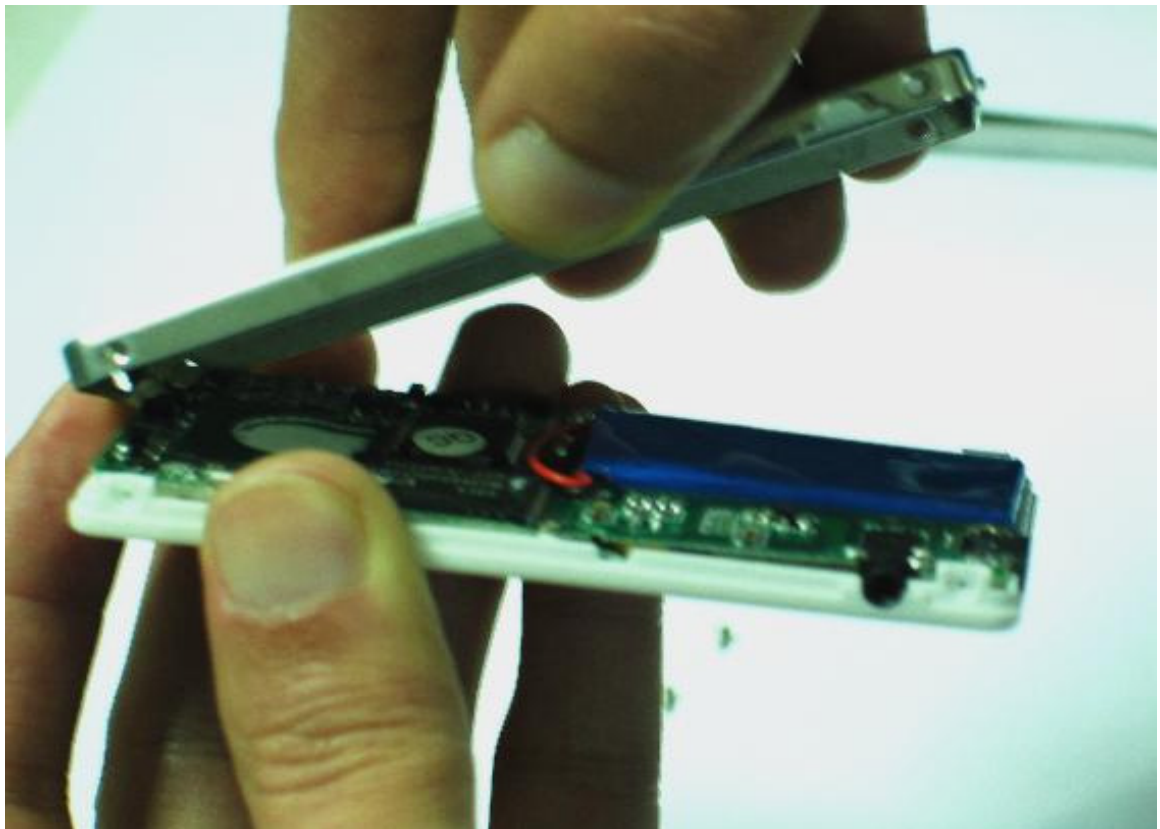
IV、 Dis-assemble the metal case of the mp4 player 3



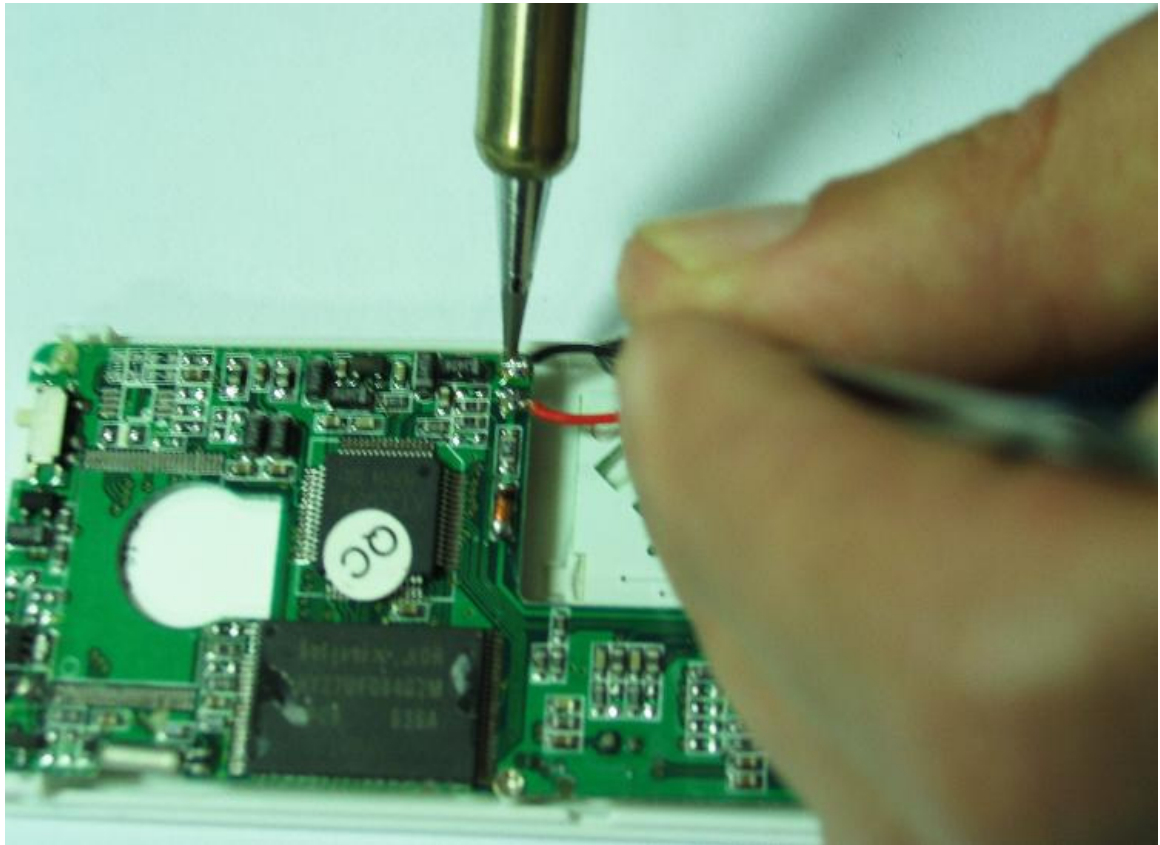
V、Dis-assemble the metal case of the mp4 player 4



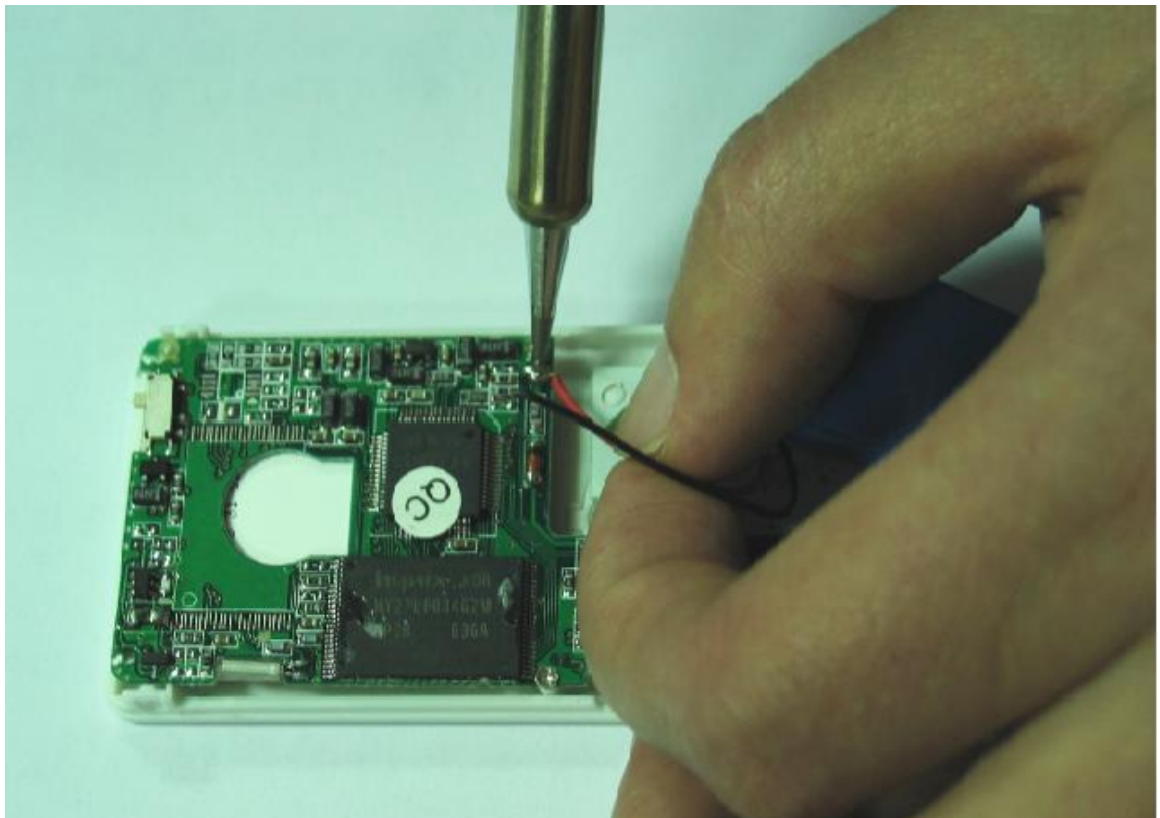
VI、Open the back cover of the mp4 player slowly after removing the four screws.



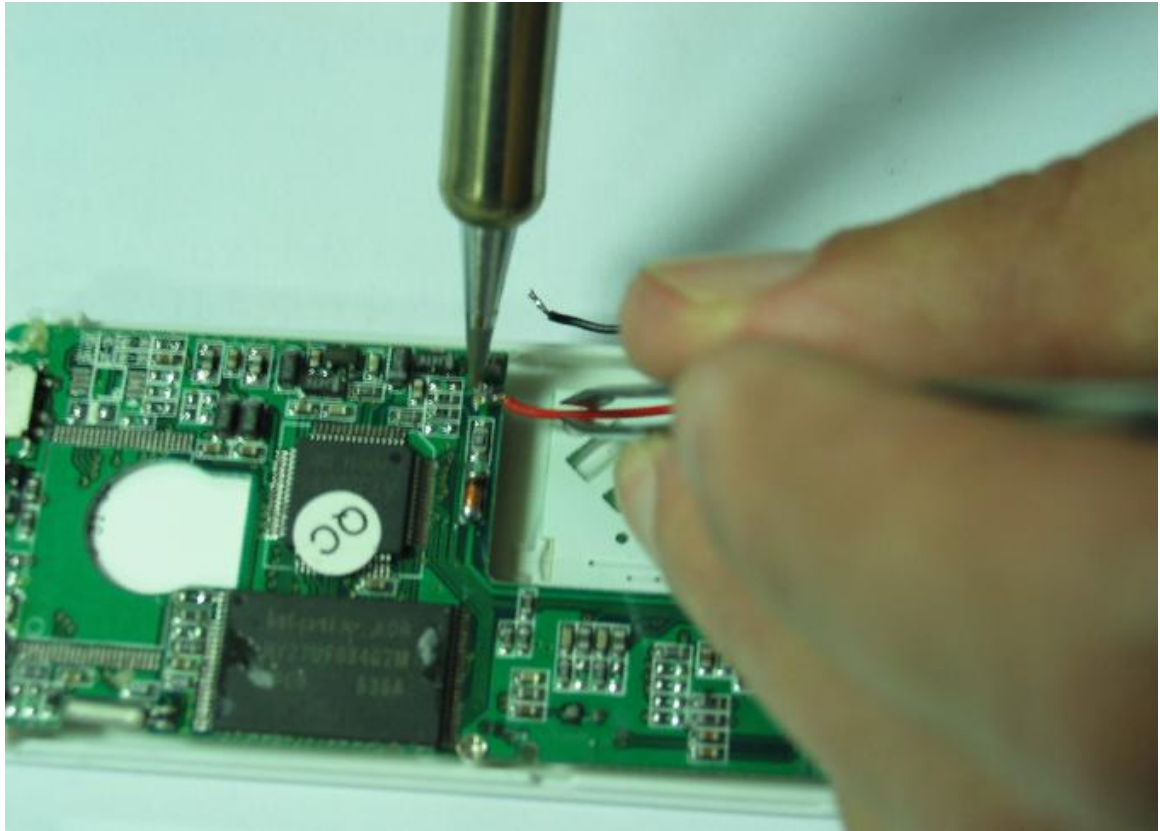
VII、 Remove the old battery 1



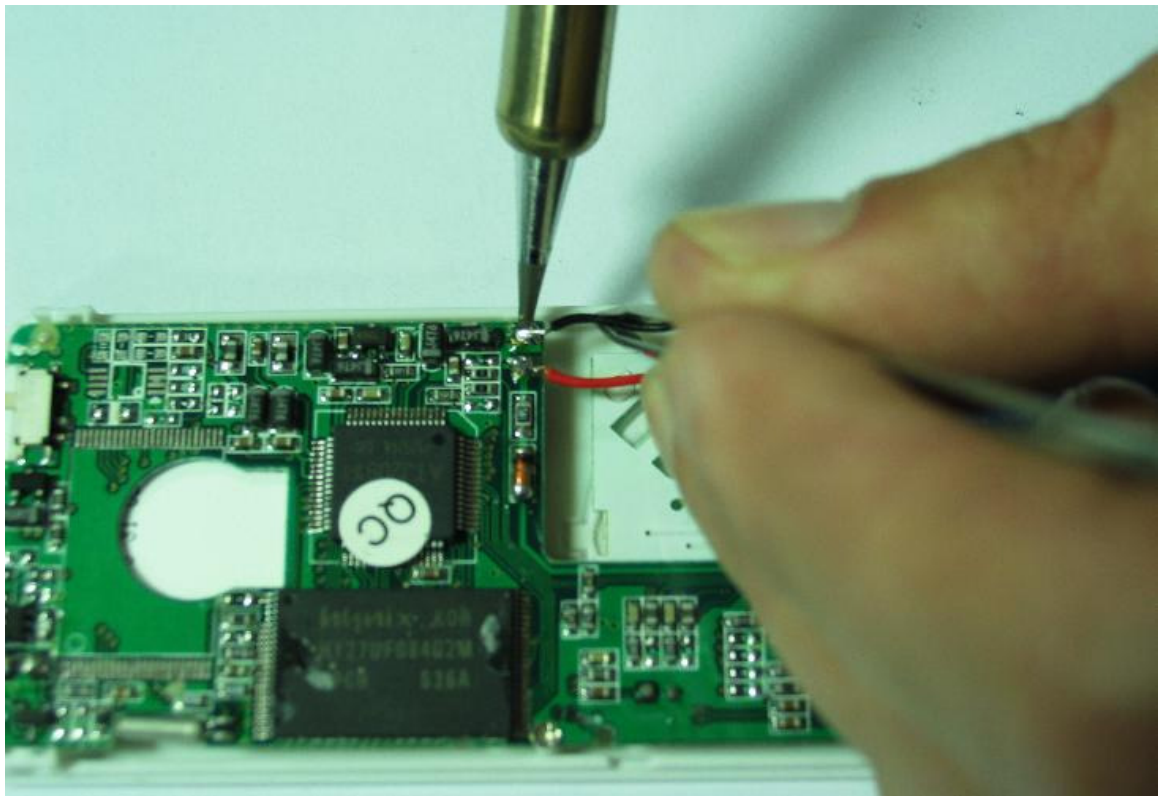
VIII、 Remove the old battery 2



IX、 Weld the anode of the new battery



X、Weld the cathode of the new battery



XI、Re-assemble the mp4 player

