

User Manual MP4-Player

A. GET YOUR MP4-PLAYER READY

- A.1. Charge the battery
- A.2. Turn on / off the player
- A.3. Speaker (this feature depends on the model)

B. SAVE SONGS ON YOUR MP4-PLAYER

C. THE STRUCTURE OF THE MAIN MENU

D. FUNCTIONS AND DISCRIPTION OF THE SUBMENUS

D.1. Music

- D.1.1. Play and stop a title
- D.1.2. Play forwards/rewind within a title
- D.1.3. Skip to the next title or previous title
- D.1.4. Adjust Volume
- D.1.5. Play titles in a folder

D.2. Further sub functions in the Menu “Music”

D.3. Voice Recording

- D.3.1. Setting the record mode
- D.3.2. Record

D.4. Play a voice- or radio recording (direct recording)

- D.4.1. Play and stop a direct recording
- D.4.2. Play forward/rewind within a direct recording
- D.4.3. Skip to the next title or previous title of your direct recording

D.5. FM-Radio

- D.5.1. Search for a radio station
- D.5.2. Further functions in the FM-Mode

D.6. Movie (AMV)



- D.6.1. Play and stop a video
- D.6.2. Play forwards/rewind within a video
- D.6.3. Skip to the next video or previous video
- D.6.4. Adjust Volume
- D.6.5. Play video in a folder

D.7. View pictures

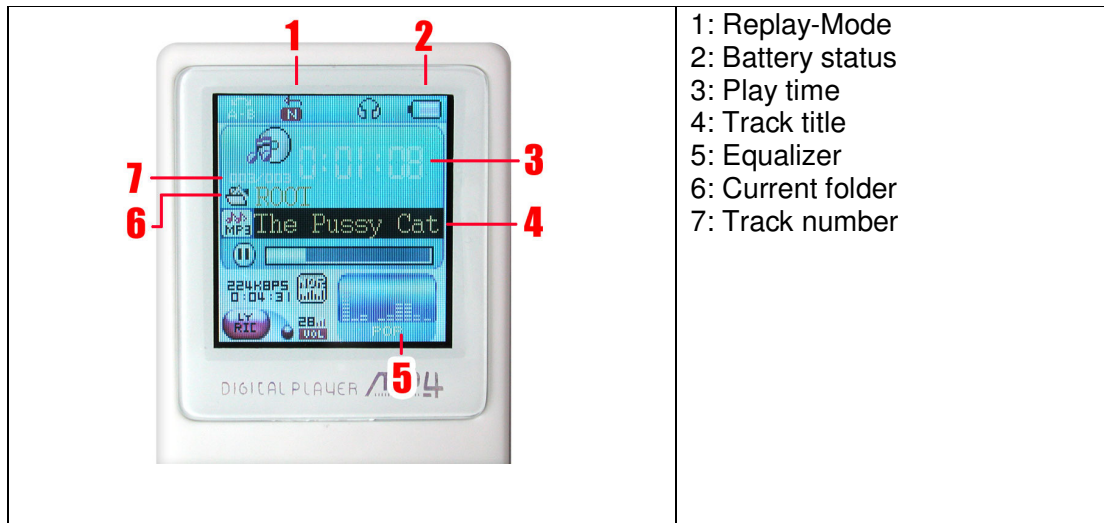
D.8. Setup (Clock/Brightness/Black (turn off display automatically)/Language/Power off/...)

D.9. The E-book

BUTTONS AND SLOTS

 <p>Diagram of the front of the MP3 player. Red numbers 1 through 6 point to specific controls: 1 points to the top power button, 2 points to the 'M' (Mode) button, 3 points to the right arrow (Skip Forward/Forward), 4 points to the 'VOL' (Volume) button, 5 points to the left arrow (Skip Backwards/Rewind), and 6 points to the central circular button (Play and Pause).</p>	<p>1: ON/OFF 2: Mode 3: Skip Forward/Forward 4: Volume 5: Skip Backwards/Rewind 6: Play and Pause</p>
 <p>Diagram of the bottom of the MP3 player. Red numbers 1 and 2 point to the ports: 1 points to the headphone socket (A) and 2 points to the USB socket (B).</p>	<p>A: Headphone socket B: USB-socket</p>

THE 65k COLOR DISPLAY



A. GET YOUR MP4-PLAYER READY

A.1. Charge the battery

Before you bring your player into service, you have to charge the battery.

For this procedure you have to connect the MP4-Player to a power source with the USB-cable (socket B). As a power source, you can use a free USB-slot of your computer or just connect the USB-cable with the adapter to your power socket.

A.2. Turn on / off the player

Push the ON/OFF-Button to the position ON or OFF

Press the „Play-Button“ (6) continuously until the animation appears in the display.

Press the „Play-Button“ (6) continuously until the Player turns off.

A.3. Speaker (this feature depends on the model)

Just unplug your earphones to listen the sound via the speaker. Notice, that you can't listen radio if you are using this function because the earphone is also working as antenna.

B. SAVE SONGS, VIDEOS AND PICTURES ON YOUR MP4-PLAYER

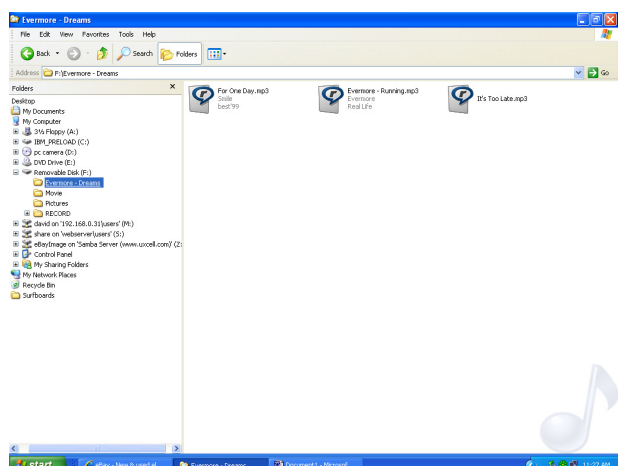
Before you can save files - you have to turn on and connect the player with your computer via the USB-cable. After the connection - Windows will recognize the player as a removable disc drive (the speed of the recognition depends on the performance of your computer). After your computer has recognize the player, please follow the next steps:

1. Open the Windows-Explore (mouse arrow on „Start“ and press the right mouse button; move the mouse arrow to Explore and click the left mouse button).
2. Now you can see in the Explore an additional removable disc drive in the left column „FOLDER“ (D:, E: or F: - depending on the number of drives you have installed in your computer) which is your MP4-Player.
3. To copy a file from your hard disc – you have to select the music file or files of your choice at first. Afterwards you can move those files via „Drag and Drop“ or via „Copy and Paste“ to your player (removable disc drive).
4. Please, make sure that you NEVER disconnect the player during the data transfer. Otherwise, it will damage the memory chip of the MP4-Player.

5. If you like to group your files - like album, artist, pictures etc. – you can create folders on your MP4-Player with the Explore (File/New/Folder). Please, get sure that the folder contains no subfolders and that there aren't more than 99 files saved in each folder on the player.

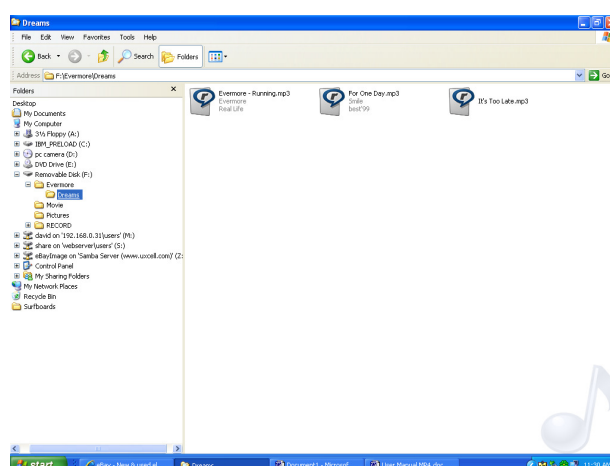
Correct (one folder for max. 99 files)

F:\Evermore-Dreams*.mp3 ...



Wrong (files in a subfolder of the folder)

F:\Evermore\Dreams*.mp3 ...



Please notice that the Player just supports the following music file formats:

- MP3, WMA

Information's how to convert music files from an audio CD etc. to an MP3-file and handle the copy protection of WMA-files will you find on our www.uxcell.com website (FAQ/Download).

C. THE STRUCTURE OF THE MAIN MENU

1.	MUSIC
2.	MOVIE (AMV)
3.	RECORD
4.	VOICE
5.	FM RADIO
6.	PHOTO
7.	SETUP
8.	E-BOOK

D. FUNCTIONS AND DISCRIPTION OF THE SUBMENUS

D.1. Music

To get access to the Menu “Music” you have to press the button “Mode” (2) once. Now the last played tile will appear in the display. Hold the button “Mode” (2) to exit the menu “Music”

D.1.1. Play and stop a title:

To play a MP3-file you have to press the button “Play” (6) once.

If you want to stop/pause the playing title than press the button “Play” (6) once again.

D.1.2. Play forwards/rewind within a title:

If you want to play forward or rewind within a track than press the button “Forward” (3) or the “Rewind-button” (5) continuously until you reach the desired point of the track.

D.1.3. Skip to the next or previous title

If you want to skip to the next title or a previous one – press once the button “Forward” (3) to skip to the next tile or the “Rewind-button” (5) to skip to the previous title.

D.1.4. Adjust the Volume

If you want to regulate the volume you have to press once the button “VOL” (4). The speaker icon in the upper right corner of the display starts blinking. Now you can increase the volume by pressing the “Forward-Button” (3) or reduce the volume by pressing the “Rewind-Button” (5).

D.1.5. Play songs in a folder

Before you play the songs that you copied in one of your created folders – please make sure that no song is playing in the meantime. Press once the button “Mode” (2) for the following menu:

FUNCTION	DISCRIPTION
LOCAL FOLDER	Press once the button “Forward” (3) or “Rewind” (5) to enter the submenu: “LOCAL FOLDER” and confirm by pressing button “Mode” (2). Now you can select by pressing the button ”Forward” (3) or “Rewind” (5) your favorite folder. To access the folder of your choice – press Play (6)
DELETE FILE	Press once the button “Play” (2) to delete the current folder
DELETE ALL	Press once the button “Play” (2) to delete all folders, which you saved on your MP4-Player.

D.2. Further sub functions in the Menu “Music”

Please make sure that a title is playing in the meantime. Press once the “Mode-button” (2) to get access to the following functions:

FUNCTION	SUB FUNCTIONS	DISCRIPTION
-----------------	----------------------	--------------------

1. Repeat	NORMAL	Will not repeat and will stop playing after all saved titles are played
	REPEAT ONE	Repeats constantly the selected title
	FOLDER	Will not repeat and will stop playing after all titles in the selected folder are played.
	REPEAT FOLDER	Repeats constantly all titles in the selected folder
	REPEAT ALL	Repeats constantly all titles which are saved on the MP4-Player
	RANDOM	Plays all saved titles randomly
	INTRO	Skip to the next title after 10 seconds
Equalizer	Natural, Rock, Pop, Classic, Soft, Jazz, DBB	Choose the sound effect of your choice.
Tempo rate		Press once the button "Rewind" (5) - to lower the play speed or press once the button "Forward" (3) - to increase the play speed
FUNCTION	SUB FUNCTIONS	DISCRIPTION
Replay		A-B Function: If you want to repeat a segment within a title of your choice, press the button "Play" (6) to mark your starting point. Press the button "Play" (6) again to mark the end of the segment, which you want to play.
Replay Times		Number of the repeats in the A-B mode Press the "Forward-button" (3) or the "Rewind-button" (5) to increase or reduce the number of repeats of your selected segment in the A-B mode (1 to 10 repeats)

Replay Gap		<i>Mute-break between the A-B repeats</i> To increase or decrease the time between the silent break in the A-B mode, press the “Forward-button” (3) or the “Rewind-button” (5)
EXIT		<i>Back to the Main Menu</i> Press once the “Mode-button” (2) to go back to the main menu

D.3. Voice Recording

Select “Record” in the Main Menu and confirm by pressing the “Mode-button” (2). Hold the button “Mode” (2) to exit the menu.

D.3.1. Determine the record mode

Before you start with the voice recording, please choose one of the following record modes (to get access to these function press once the button “Mode” (2).

FUNCTION	SUB FUNCTIONS	DISCRIPTION
LOCAL FOLDER		<i>Select a folder:</i> Choose the folder where you want to save the voice recording
REC-TYPE	Fine REC	Record in 32K WAV-Format
	Long REC	Record in ACT-Format
FUNCTION	SUB FUNCTIONS	DISCRIPTION
	Fine VOR *	<i>Record in 32K WAV-Format:</i> - When the voice dictation stops, the recording will stop automatically - As soon as you continue your dictation – the recording will start automatically
	Long VOR *	<i>Recording in ACT-Format:</i> - When the voice dictation stops, the recording will stop automatically - As soon as you continue your dictation - the recording will start automatically

EXIT		Back to the Main Menu Press once the "Mode-button" (2) to go back to the main menu
------	--	--

* Please, make sure that there is no background noise around you.

D.3.2. Record

After you choose your record mode, press the button "Play" (6) to start the recording of your dictation.

To stop the recording, you have to press once the "Play" (6) again. If you like to continue, press the same button again.

To save the recording permanently - including your breaks – as one file on your MP4-Player, press the button "Play" (6) continuously until the text: "Saving..." appears in your display.

D.4. Playing a voice- or radio recording (direct recording)

Select "Voice" in the Main Menu and confirm by pressing the "Mode-button" (2). Hold the button "Mode" (2) to exit the menu.

D.4.1. Play and stop of a direct recording

To play a direct recording, you have to press once the button "Play" (6).

If you want to stop the play mode of the direct recording, press once the button "Play" (6) again.

D.4.2. Play forward/rewind within a direct recording

If you want to play forward or rewind within a direct recording, press the button "Forward" (3) or the "Rewind-button" (5) continuously until you reach the desired point of your recording.

D.4.3 Skip to the next title or previous title of your direct recording

If you want to skip to the next title or previous one – press once the button "Forward" (3) to skip to the next title or the "Rewind-button" (5) to skip to the previous title of your direct recording.

D.5. FM-Radio

Select "FM Radio" in the main menu and confirm by pressing the "Mode-button" (2). Hold the button "Mode" (2) to exit the menu.

D.5.1. Search for a radio station

Press once the button "Forward" (3) or rather the "Rewind-button" (5) to scan the frequency band in 0.1 MHz until you reach the radio station of your choice.

Hold the "Forward-button" (3) or the "Rewind-button" (5) until the player starts scanning automatically for the next local radio station in your area.

Press the button "Play" (6) to skip between the radio stations, which you have saved in the player (please, follow the instruction D.5.2. for saving a radio station).

D.5.2. Further functions in the FM-Mode

To get access to more functions of the FM-Mode press shortly the button “Mode” (2).

FUNCTION	DISCRIPTION
Save	<i>Save a radio station:</i> Press once the “Mode-button” (2) to save a radio station of your choice.
DELETE	Delete the selected saved radio station (confirm with Mode (2))
DELETE ALL	Delete all saved radio stations (confirm with Mode (2))
Normal Band	Regular frequency band (confirm with Mode (2))
Japan Band	Frequency band for radio stations in Japan (press Mode (2))
Fine Rec	<i>Record in 32K WAV-Format:</i> <ul style="list-style-type: none"> - Confirm the recording by pressing the “Mode-button ” (2) - Press once the “Play-button” (6) to start the recording. - Press once the “Play-button” (6) to stop the recording. - Press once the button “Play” (6) again to continue the recording - Press the button “Play” (6) continuously until the text: “Saving” appears in the display - to save the recording permanently - including breaks – as one file in your MP4-Player
Long Rec	<i>Recording in ACT-Format:</i> <ul style="list-style-type: none"> - Confirm the recording by pressing the “Mode-button ” (2) - Press once the “Play-button” (6) to start the recording. - Press once the “Play-button” (6) to stop the recording. - Press once the button “Play” (6) again to continue the recording - Press the button “Play” (6) continuously until the text: “Saving” appears in the display - to save the recording permanently - including breaks – as one file in your MP4-Player
EXIT	<i>Back to the Main Menu</i> Hold the “Mode-button” (2) to go back to the main menu

D.6. AMV-Movies

Please, notice that this MP4-Player only supports videos in the AMV-format. The converter software and more information's - how to convert MPEG-, ASF-, AVI files to the AMV-format – can you find on our homepage www.uxcell.com (FAQ > DOWNLOAD).

To get access to the Menu “Movie” you have to press the button “Mode” (2) once. Now the last played video will appear on the display. Hold the button “Mode” (2) to exit the menu.

D.6.1. Play and stop a Video:

To play an AMV-video you have to press the button “Play” (6) once.

If you want to stop the title than press the button “Play” (6) once again.

D.6.2. Play forwards/rewind within a video:

If you want to play forward or rewind within a video than press the button “Forward” (3) or the “Rewind-button” (5) continuously until you reach the desired point of the video.

D.6.3. Skip to the next- or previous video

If you want to skip to the next video or a previous one – press once the button “Forward” (3) to skip to the next video or the “Rewind-button” (5) to skip to the previous video.

D.6.4. Adjust the Volume

At first get sure that no video is playing. If you want to regulate the volume you have to press once the button “VOL“ (4). The speaker icon in the upper right corner of the display starts blinking. Now you can increase the volume by pressing the “Forward-Button” (3) or reduce the volume by pressing the “Rewind-Button” (5).

D.6.5. Play a video in a folder

Before you play the video that you copied in one of your created folders – please make sure that no other video is playing in the meantime. Press once the button “Mode” (2) for the following menu:

FUNCTION	DISCRIPTION
LOCAL FOLDER	Press once the button “Forward” (3) or “Rewind” (5) to enter the submenu: “LOCAL FOLDER” and confirm by pressing button “Mode” (2). Now you can select by pressing the button “Forward” (3) or “Rewind” (5) your favorite folder. To access the folder of your choice – press Play (6)
DELETE FILE	Press once the button “Play” (2) to delete the current folder
DELETE ALL	Press once the button “Play” (2) to delete all folders, which you saved on your MP4-Player.

D.7. View Pictures

To get access to the Menu “Photo“ you have to press the button “Mode“ (2) once. Now a list with all your photos (just JPEG and GIF) will appear on the display. Hold the button “Mode“ (2) to exit the menu.

D.7.1. Watch photos

Select a picture of your choice by pressing “Forward” (3) or “Backwards” (5) and confirm by pressing “Play” (6) to watch it.

D.7.2. Skip to the next or previous picture (Play Set = Manual Play)

If you want to skip to the next picture or a previous one – press once the button “Forward” (3) to skip to the next picture or the “Rewind-button” (5) to skip to the previous picture.

D.7.3. Exit the Picture-Slideshow

Press “Play” to leave the picture slide show.

D.7.4. Play a pictures in a folder

Before you play the picture that you copied in one of your created folders – please, make sure that the picture slideshow is not running. Press once the button “Mode” (2) for the following menu:

FUNCTION	DISCRIPTION
LOCAL FOLDER	Press once the button “Forward” (3) or “Rewind” (5) to enter the submenu: “LOCAL FOLDER” and confirm by pressing button “Mode” (2). Now you can select by pressing the button “Forward” (3) or “Rewind” (5) your favorite folder. To access the folder of your choice – press Play (6)
DELETE FILE	Press once the button “Play” (2) to delete the current folder
DELETE ALL	Press once the button “Play” (2) to delete all folders, which you saved on your MP4-Player.

D.7.6. Set Play-Mode for picture slideshow (“Manual Play” or “Auto Play”)

You are able to choose between 2 different slideshow modes. The “Manual Play” allows you to skip to the next pictures by yourself (see D.7.2). The “Auto Play” mode will skip the pictures automatically.

To set the “**Manual Play**” mode - press “Mode” (2) in the Menu “Photo”. Now select the option “Play Set” and the option “Manual Play” (confirm the selection by pressing the “Mode-Button” (2)).

To set the “**Auto Play**” mode - press “Mode” (2) in the Menu “Photo”. Now select the option “Play Set” and the option “Auto Play” (confirm the selection by pressing the “Mode-Button” (2)). After this a submenu will appear. Here you have the choice to set the time line from 1 sec. to 10 sec. To increase the show time of the picture press the button “Forward” (3) or press “Backwards” (5) to decrease the time between each photo. Confirm your selection with the button “Mode” (2).

D.8. Setup (SYSTEM SETTINGS)

Select “Setup” in the Main Menu and confirm by pressing the “Mode-button” (2). Now you can enter to the following sub menus:

FUNCTION	SUB FUNCTIONS	DISCRIPTION
Clock		Set clock and date: Press the button “Vol.” (4) to switch between seconds, minutes, hours, day, month, year). To increase or decrease one of these data, press the “Forward-button” (3) or the button “Rewind” (5).

FUNCTION	SUB FUNCTIONS	DISCRIPTION
LCD set	Brightness	Set the brightness by pressing the button "Forward" (3) or "Rewind" (5) and confirm by pressing the button "Mode" (2)
	Black (Save energy)	Set the time that the display turns off automatically. With this function you save energy and allows increasing the playing time. Set the time (5 sec. to 30 sec.) by pressing the button "Forward" (3) or "Rewind" (5) and confirm by pressing the button "Mode" (2). If you want to turn off this function - than set the time to "0".
Language	Simple Chinese, Trad Chinese, English, Japanese, Korean, German, French, Italian, Spanish, Swedish, Czech, Dutch, Portuguese, Danish, Polish	Choose your language by pressing the button "Forward" (3) or "Rewind" (5) and confirm by pressing the button Mode (2).
Power off	Off time	Enter the idle time (0 sec. to 60 sec.) for the Player to be turned off automatically by pressing the button "Forward" (3) or "Rewind" (5) and confirm by pressing the button "Mode" (2). If you want to turn off this function - than set the time to "0".
	Sleep time	Enter the playtime (0 min. to 120 min.) for the Player to be turned off automatically afterwards by pressing the buttons "For-ward" (3) or "Rewind" (5). If you want to turn off this function - than set the time to "0".
Memory info		Shows you the used space of your Flash Memory Chip.
F/W Version		Shows you the file name of the actual firmware
EXIT		Back to the Main Menu Press once the "Mode-button" (2) to go back to the main menu

D.9. E-book

Press once the button “Mode” (2) for the following menu.

FUNCTION	SUB FUNCTIONS	DISCRIPTION
DIR		Folder Choose the folder where you saved your e-book
FILE		Choose a e-book title Choose the title of your e-book, by pressing the button “Forward” (3) or “Rewind” (5) the title of your e-book and confirm by pressing “Mode” (2)
LOOK		After pressing the “Mode-button” (2), you can read your e-book, which you have chosen. Press the button “Forward” (3) or the button “Rewind”(5) to flip through your e-book.

Press the button “Mode” (2) to leave this menu.