

UXCell MP4 Player

User manual

Content >>

A. GET YOUR MP4-PLAYER READY

- A.1. Charge the battery
- A.2. Turn on / off the player
- A.3. Speaker (this feature depends on the model)

B. SAVE SONGS ON YOUR MP4-PLAYER

C. FUNCTIONS AND DISCRIPTION OF THE SUBMENUS

C.1. Music

- C.1.1. Play and stop a title
- C.1.2. Play forwards/rewind within a title
- C.1.3. Skip to the next title or previous title
- C.1.4. Adjust Volume
- C.1.5. Play titles in a folder

C.2. Further sub functions in the Menu “Music”

C.3. Voice Recording

- C.3.1. Setting the record mode
- C.3.2. Record

C.4. Play a voice- or radio recording (direct recording)

- C.4.1. Play and stop a direct recording
- C.4.2. Play forward/rewind within a direct recording
- C.4.3. Skip to the next title or previous title of your direct recording

C.5. FM-Radio

- C.5.1. Search for a radio station
- C.5.2. Further functions in the FM-Mode

C.6. Movie (AMV)

- C.6.1. Play and stop a video
- C.6.2. Play forwards/rewind within a video
- C.6.3. Skip to the next video or previous video
- C.6.4. Adjust Volume
- C.6.5. Play video in a folder

C.7. View pictures


C.8. Setup (Clock/Brightness/Black (turn off display automatically)/Language/Power off/...)


C.9. The E-book

The MP4 Player >> Controls and Components

 <p>A front-facing view of a black MP4 player. The screen displays a music interface with icons for various functions. Red numbers 1 through 7 are placed around the device with lines pointing to specific controls: 1 points to the power button on the left side; 2 points to the mode button on the right side; 3 points to the skip forward button on the right side; 4 points to the volume up/down buttons on the left side; 5 points to the skip backward button on the right side; 6 points to the play/pause button on the right side; and 7 points to the record button on the left side.</p>	<p>The Body (1)</p> <ul style="list-style-type: none">1: ON/OFF2: Mode3: Skip Forward/Forward4: Volume +/-5: Skip Backwards/Reverse6: Play and Pause7: Start Recording
 <p>A bottom-facing view of the MP4 player. Red numbers 1 and 2 are placed near the bottom edge with lines pointing to specific ports: 1 points to the headphone socket on the left; and 2 points to the USB socket on the right.</p>	<p>The Body (2)</p> <ul style="list-style-type: none">1: Headphone socket2: USB-socket

The MP4 Player >> Using the Menu Screen

	<p>The Main Menu</p> <ul style="list-style-type: none"> 1: Music 2: Video 3: FM Radio 4: Photo 5: Text 6: Record 7: Navigation 8: Game 9: Settings
---	--

	<p>The Music Playing Screen</p> <ul style="list-style-type: none"> 1: Play Mode 2: Battery status 3: Play time 4: Track title 5: Volume 6: Track number
---	--

A. GET YOUR MP4-PLAYER READY

A.1. Charge the battery

Before you bring your player into service, you have to charge the battery.

For this procedure you have to connect the MP4-Player to a power source with the USB-cable (socket B). As a power source, you can use a free USB-port of your computer or just connect the USB-cable with the adapter to your power socket.

A.2. Turn on / off the player

Push the ON/OFF-Button to the position ON or OFF

Press the "Play-Button" (6) continuously until the animated picture appears in the display.

Press the „Play-Button" (6) continuously until the Player turns off.

A.3. Speaker (this feature depends on the model)

Just unplug your earphones to listen the sound via the speaker. Notice: you can't listen radio if you are using this function because the earphone is also working as antenna.

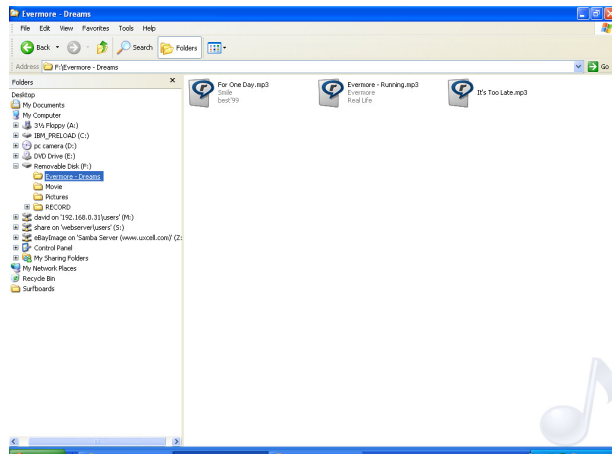
B. SAVE SONGS, VIDEOS AND PICTURES ON YOUR MP4-PLAYER

Before you can save files - you have to turn on and connect the player with your computer via the USB-cable. After the connection several seconds - Windows will recognize the player as a removable disc drive (the speed of the recognition depends on the performance of your computer). After your computer has recognized the player, please follow the next steps:

1. Open the Windows-Explorer (mouse arrow on "Start" and press the right mouse button; move the mouse arrow to Explore and click the left mouse button).
2. Now you can see in the Explorer an additional removable disc drive in the left column "FOLDER" (D:, E: or F: - depending on the number of drives you have installed in your computer) which is your MP4-Player.
3. To copy a file from your hard disc – you have to select the music file or files of your choice at first. Afterwards you can move those files via "Drag and Drop" or via "Copy and Paste" to your player (removable disc drive).
4. Please, make sure that you NEVER disconnect the player during the data transfer. Otherwise, it will damage the memory chip of the MP4-Player.
5. If you like to group your files - like album, artist, pictures etc. – you can create folders on your MP4-Player with the Explorer (File/New/Folder). Please, get sure that the folder contains no subfolders and that there aren't more than 99 files saved in each folder on the player.

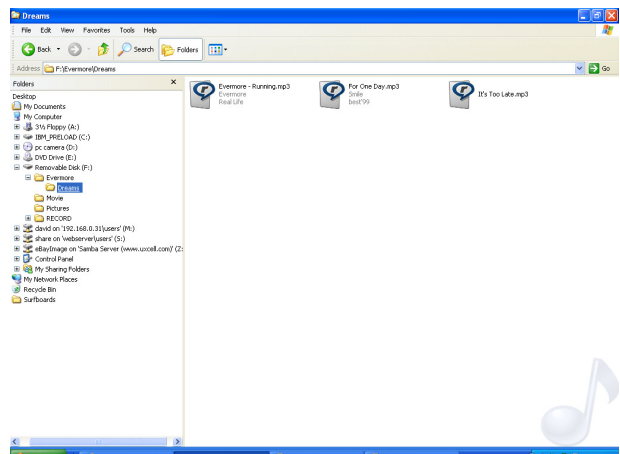
Correct (one folder for max. 99 files)

F:\Evermore-Dreams*.mp3 ...



Wrong (files in a subfolder of the folder)

F:\Evermore\Dreams*.mp3 ...



Please notice that the Player just supports the following music file formats:

- MP3, WMA

Information's how to convert music files from an audio CD etc. to an MP3-file and handle the copy protection of WMA-files will you find on our www.uxcell.com website (FAQ/Download).

C. FUNCTIONS AND DISCRIPTION OF THE SUBMENUS

C.1. Music

To get access to the Menu "Music", you have to press the button "Mode" (2) once. Now the last played tile will appear in the display. Press "Play" (6) once to pause the music, then hold the "Mode" (2) for two seconds to exit the "Music"

C.1.1. Play and stop a title:

To play a MP3-file you have to press the button "Play"(6) once.

If you want to stop/pause the playing title than press the button "Play"(6) once again.

C.1.2. Play forwards/reverse within a title:

If you want to play forward or reverse within a track than press the button "Forward" (3) or the "Reverse-button" (5) continuously until you reach the desired point of the track.

C.1.3. Skip to the next or previous title

If you want to skip to the next title or a previous one – press once the button "Forward" (3) to skip to the next tile or the "Reverse-button" (5) to skip to the previous title.

C.1.4. Adjust the Volume

If you want to regulate the volume you have to press once the button "VOL" (4). The speaker icon on the right-bottom corner of the screen displays digit of volume on the scrollbar. Now you can

increase the volume by pressing the “Volume +” (3) or reduce the volume by pressing the “Volume -” (5).

C.1.5. Play songs in a folder

Before you play the songs that you can enter the “settings” to set the play modes, press once the button “Mode” (2) to enter the “settings” mode for the following menu:

MENU	SUB MENU	DISCRIPTION
Music Folder	<ul style="list-style-type: none"> ● Repeat mode ● Play mode ● EQ select ● User EQ set 	You can choose desired mode to set, you press the “mode button” to enter the sub menu and press the “forward or reverse button” to choose your desired item
Exit		Back to the Main Menu Press once the “Mode-button” (2) to go back to the main menu

C.2.Voice Recording

Select “Record” mode in the Main Menu and confirm by pressing the “Mode-button” (2). Hold the button “Mode” (2) for two seconds to exit the menu.

C.2.1. Determine the record mode

Before you start with the voice recording, please enter the settings to set one of the following record modes (to get access to these function press once the button “Mode” (2).

MENU	SUB MENU	DISCRIPTION
LOCAL FOLDER	*REC Quality *REC Volume	Select a folder: Choose the folder where you want to save the voice recording or REC-type
REC quality Folder	High Quality REC	Record in 32K WAV-Format
	General REC	Record in ACT-Format
MENU	SUB MENU	DISCRIPTION
REC Volume Folder	<ul style="list-style-type: none"> ● +1 ● +2 ● +3 ● +4 ● +5 	Choose REC volume to enter the volume item choose, you can set recording volume and choose volume from 1 to 5
EXIT		Back to the Main Menu Press once the “Mode-button” (2) to go back to the main menu

* Please, make sure that there is no background noise around you.

C.2.2. Record

After you choose your record mode, press the button “Start Recording “ (7) to start the recording of your dictation.

To stop the recording, you have to press once the “Start Recording “ (7) again. If you like to continue, press the same button again.

To save the recording permanently - including your breaks – as one file on your MP4-Player, press the button “Mode” (2) continuously until the text: “Saving...” appears in your display.

C.3. Playing a voice- or radio recording (direct recording)

Select “Music” in the Main Menu and confirm by pressing the “Mode-button“ (2). Your records are at the beginning of the music. Hold the button “Mode“ (2) to exit the menu, just like play a song.

C.3.1. Play and stop of a direct recording

To play a direct recording, you have to press once the button “Play“ (6).

If you want to stop the play mode of the direct recording, press once the button “Play“ (6) again.

C.3.2. Play forward/rewind within a direct recording

If you want to play forward or rewind within a direct recording, press the button “Forward” (3) or the “Rewind-button” (5) continuously until you reach the desired point of your recording.

C.3.3 Skip to the next title or previous title of your direct recording

If you want to skip to the next title or previous one – press once the button “Forward” (3) to skip to the next title or the “Rewind-button” (5) to skip to the previous title of your direct recording.

C.4. FM-Radio

Select “FM Radio” in the main menu and confirm by pressing the “Mode-button“ (2). Hold the button “Mode“ (2) to exit the menu.

C.4.1. Search for a radio station

Press once the button “Forward” (3) or rather the “Rewind-button“ (5) to scan the frequency band in 0.1 MHz until you reach the radio station of your choice.

Hold the “Forward-button” (3) or the “Rewind-button“ (5) until the player starts scanning automatically for the next local radio station in your area.

Press the button “Play“ (6) to skip between the radio stations, which you have saved in the player (please, follow the instruction C.4.2. for saving a radio station).

C.4.2. Further functions in the FM-Mode

To get access to more functions of the FM-Mode press shortly the button “Mode” (2).

FUNCTION	DISCRIPTION
Save	<i>Save a radio station:</i> Press once the “Mode-button” (2) to save a radio station of your choice.
DELETE	Delete the selected saved radio station (confirm with Mode (2))
DELETE ALL	Delete all saved radio stations (confirm with Mode (2))
Europe Band	Frequency band for radio stations in Europe (confirm with Mode (2))
Japan Band	Frequency band for radio stations in Japan (press Mode (2))
USA Band	Frequency band for radio stations in USA
Fine Rec	<i>Record in 32K WAV-Format:</i> - Confirm the recording by pressing the “Mode-button ” (2) - Press once the “Play-button” (6) to start the recording. - Press once the “Play-button” (6) to stop the recording. - Press once the button “Play” (6) again to continue the recording - Press the button “Play” (6) continuously until the text: “Saving” appears in the display - to save the recording permanently - including breaks – as one file in your MP4-Player
Long Rec	<i>Recording in ACT-Format:</i> - Confirm the recording by pressing the “Mode-button ” (2) - Press once the “Play-button” (6) to start the recording. - Press once the “Play-button” (6) to stop the recording. - Press once the button “Play” (6) again to continue the recording - Press the button “Play” (6) continuously until the text: “Saving” appears in the display - to save the recording permanently - including breaks – as one file in your MP4-Player
EXIT	<i>Back to the Main Menu</i> Hold the “Mode-button” (2) to go back to the main menu

C.5. AMV-Movies

Please, notice that this MP4-Player only supports videos in the AMV-format. The converter software and more information's - how to convert MPEG-, ASF-, AVI files to the AMV-format – can you find on our homepage www.uxcell.com (FAQ > DOWNLOAD).

To get access to the Menu “Movie” you have to press the button “Mode” (2) once. Now the last played video will appear on the display. Hold the button “Mode” (2) to exit the menu.

C.5.1. Play and stop a Video:

To play an AMV-video you have to press the button “Play” (6) once.

If you want to stop the title than press the button “Play” (6) once again.

C.5.2. Play forwards/rewind within a video:

If you want to play forward or rewind within a video than press the button “Forward” (3) or the “Rewind-button” (5) continuously until you reach the desired point of the video.

C.5.3. Skip to the next- or previous video

If you want to skip to the next video or a previous one – press once the button “Forward” (3) to skip to the next video or the “Rewind-button” (5) to skip to the previous video.

C.5.4. Adjust the Volume

At first get sure that no video is playing. If you want to regulate the volume you have to press once the button “VOL“ (4). The speaker icon in the upper left corner of the displayer will appear sound number.

C.5.5. Play a video in a folder

Before you play the video that you copied in one of your created movie folder – please make sure that no other video is playing in the meantime. Press once the button “Mode” (2) for the following menu:

MENU	SUB MENU	DISCRIPTION
Movie Folder	<ul style="list-style-type: none"> ● voice ● e-book ● movie ● music ● picture ● recycler 	You can choose desired mode to set, you press the “mode button” to enter the sub menu and press the “forward or reverse button” to choose your desired item, also you can mange your files
Movie file	Your saving AMV movies will display on the screen	Press the “mode” to enter the AMV movie choose, then press the “forward or reverse button” to chose movie and press the “mode button” again to play movie
Exit		Back to the Main Menu Press once the “Mode-button” (2) to go back to the main menu

C.6. View Pictures

To get access to the Menu “Photo“ you have to press the button “Mode“ (2) once to select “picture”. Now a list with all your photos (just JPEG and GIF) will appear on the display. Hold the button “Mode“ (2) to exit the menu.

C.6.1. Watch photos

Select a picture of your choice by pressing “Forward” (3) or “Backwards” (5) and confirm by pressing “Play” (6) to watch it.

C.6.2. Skip to the next or previous picture (Play Set = Manual Play)

If you want to skip to the next picture or a previous one – press once the button “Forward” (3) to skip to the next picture or the “Rewind-button” (5) to skip to the previous picture.

C.6.3. Exit the Picture-Slideshow

Press "Mode" continuously to leave the picture slide show.

C.6.4. Play a picture in a folder

Before you play the picture that you copied in one of your created folders – please, make sure that the picture slideshow is not running. Press once the button "Mode" (2) for the following menu:

FUNCTION	DISCRIPTION
LOCAL FOLDER	Press once the button "Forward" (3) or "Rewind" (5) to enter the submenu: "LOCAL FOLDER" and confirm by pressing button "Mode" (2). Now you can select by pressing the button "Forward" (3) or "Rewind" (5) your favorite folder. To access the folder of your choice – press Play (6)
DELETE SONG	Press once the button "Start Recording" (7) to delete the current folder

C.7. Setup (SYSTEM SETTINGS)

Select "Setup" in the Main Menu and confirm by pressing the "Mode-button" (2). Now you can enter to the following sub menus:

FUNCTION	SUB FUNCTIONS	DISCRIPTION
Music	Please note it in the next table	You can set repeat mode, play mode, EQ select and User EQ set.
FM Radio		Choose the status of stereo SW "on" or "off", select FM region, China, Europe, Japan or USA
Record		Select record quality, high quality or general quality; select record volume from 1-5.
Display		Select the blight time, lum and blight mode.
Power off time	Off time	Enter the idle time (0 sec. to 60 sec.) for the Player to be turned off automatically by pressing the button "Forward" (3) or "Rewind" (5) and confirm by pressing the button "Mode" (2). If you want to turn off this function - than set the time to "0".
	Sleep time	Enter the playtime (0 min. to 120 min.) for the Player to be turned off automatically afterwards by pressing the buttons "Forward" (3) or "Rewind" (5). If you want to turn off this function - than set the time to "0".
System		Choose language, check the version, go to upgrade and default set.
Format		To format what you do not need.

C.8. E-book

Press once the button “Mode” (2) for the following menu.

FUNCTION	SUB FUNCTIONS	DISCRIPTION
DIR		<i>Folder</i> Choose the folder where you saved your e-book
FILE		<i>Choose a e-book title</i> Choose the title of your e-book, by pressing the button “Forward” (3) or “Rewind” (5) the title of your e-book and confirm by pressing “Mode” (2)
LOOK		After pressing the “Mode-button” (2), you can read your e-book, which you have chosen. Press the button “Forward” (3) or the button “Rewind”(5) to flip through your e-book.

Press the button “Mode” (2) to leave this menu.